

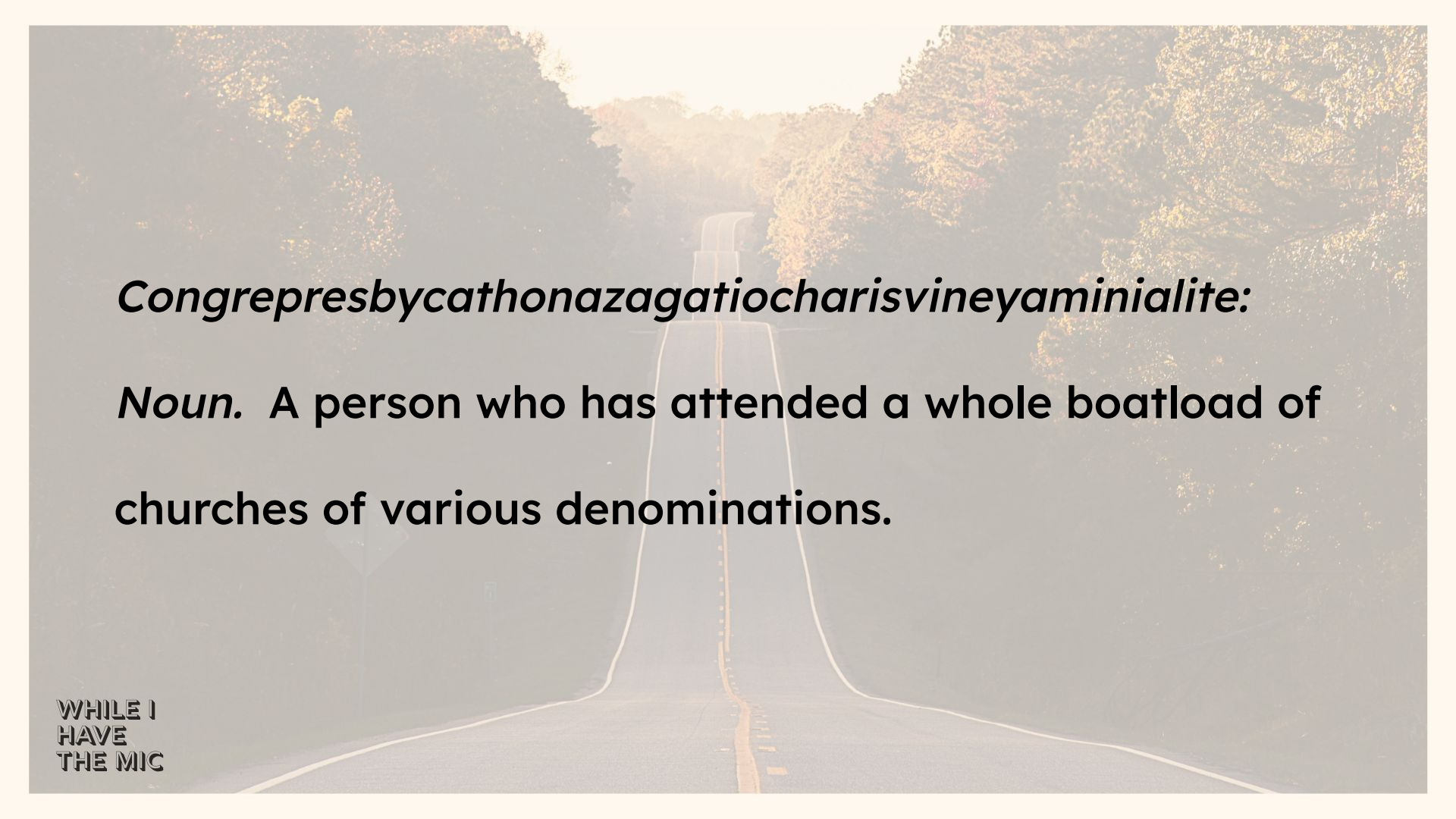
A scenic view of a winding asphalt road through a forest at sunset. The road curves through dense trees, with a warm, golden light filtering through the canopy. The text "WHILE I HAVE THE MIC" is overlaid in a large, white, stylized font with a hatched shadow effect. The text is centered across the road, with "WHILE I HAVE" on the top line and "THE MIC" on the bottom line.

WHILE I HAVE
THE MIC



**WHILE I HAVE
THE MIC**

OF SAINTS AND DAFFODILS



Congrepresbycathonazagatiocharisvineyaminialite:

Noun. A person who has attended a whole boatload of churches of various denominations.

WHILE I
HAVE
THE MIC

A photograph of a paved road winding through a dense forest. The road has a yellow center line and white edge lines. The trees are tall and green, with sunlight filtering through the canopy. In the center of the image, there is a semi-transparent rectangular box containing the text "In Olden Days...".

In Olden Days...

WHILE I
HAVE
THE MIC



St. Augustine of Hippo

**WHILE I
HAVE
THE MIC**

PELAGIUS

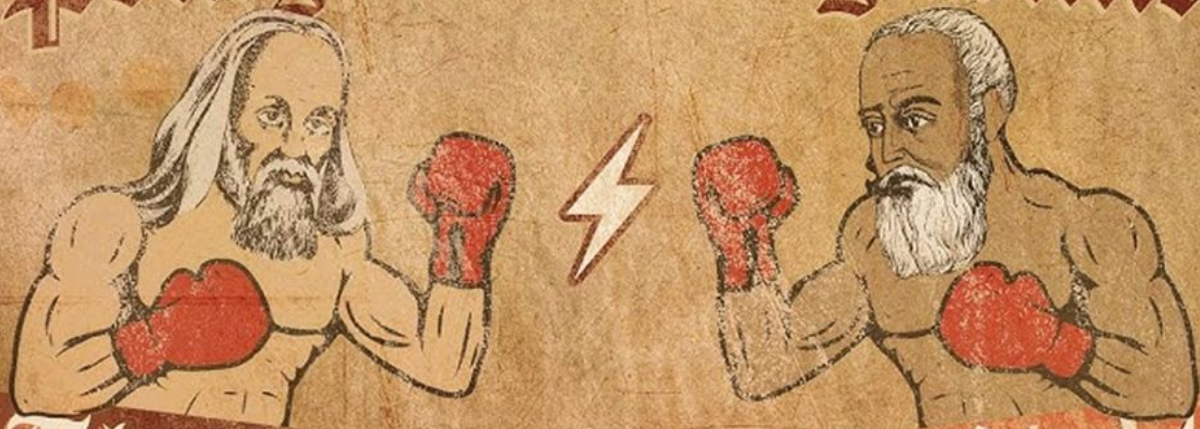
*Accusest Pelagius with what false pretence
Durst thou excuse Mans foule Concupiscence?
Or cry down Sin Originall, or that
The Loue of GOD did Man predestinate.*



PELAGIUS

WHILE I
HAVE
THE MIC

Pelagius vs Augustine



Theological Fight Night

WHILE I
HAVE
THE MIC

Augustine vs Pelagius

■ Augustine

- We all inherit from Adam a will that has already fallen, a will that chooses evil continually. Because of Sin the will is unable to choose good.

■ Pelagius

- Man is basically good and is always able to choose good.



Green = Irish Celts
 Red = Visigoths
 Blue = Roman Catholics

WHILE I
 HAVE
 THE MIC

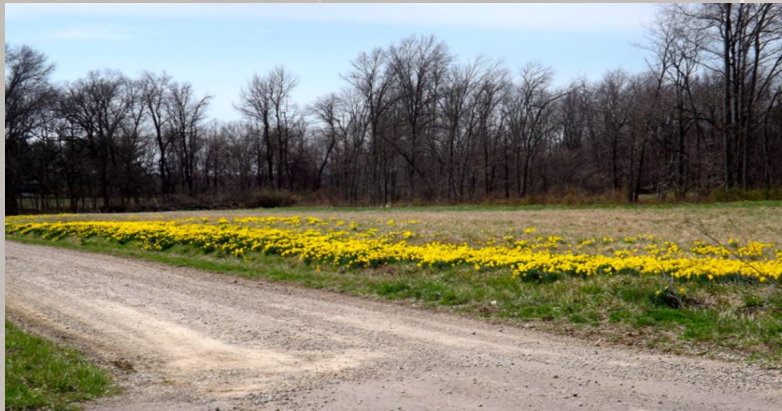


WHILE I
HAVE
THE MIC

[Saint] Eriugena



WHILE I
HAVE
THE MIC



WHILE I
HAVE
THE MIC



Healthy Bulbs



Unhealth Blubs

WHILE I
HAVE
THE MIC

A photograph of a road with a large, glowing, funnel-shaped structure in the center. The structure is made of a translucent material and has a bright orange light source inside, creating a strong glow. The road is paved and has a yellow dashed line down the center. The surrounding area is filled with trees, and the overall scene is dimly lit, suggesting dusk or dawn.

So what difference could it make?

- **Our Image of God**

**WHILE I
HAVE
THE MIC**



So what difference could it make?

- **Our Image of God**
- **Our Image of Self**

WHILE I
HAVE
THE MIC



So what difference could it make?

- **Our Image of God**
- **Our Image of Self**
- **How We See Creation**



So what difference could it make?

- Our Image of God
- Our Image of Self
- How We See Creation
- How We See Others

So what difference could it make?

- **Our Image of God**
- **Our Image of Self**
- **How We See Creation**
- **How We See Others**
- **How We Respond When We Get Off Course**